



Horizontal Single Stage Centrifugal Pump , Electric Centrifugal Chemical Pump

Our Product Introduction

Basic Information

- Place of Origin: Sichuan, China
- Brand Name: horizontal-slurypump.com
- Certification: ISO9001
- Model Number: OEM
- Minimum Order Quantity: 1 set
- Price: USD 500-5000/set
- Packaging Details: free fumigation export wooden box packaging
- Delivery Time: 25 working days after receiveing advance payment
- Payment Terms: L/C, D/A, D/P, T/T, Western Union, MoneyGram, Paypal
- Supply Ability: 300 sets per month



Product Specification

- Theory: Centrifugal Pump
- Flow: 8-1000m3/h
- Head: 15-120m
- Pressure: 1.6MPa
- Liquid: Acid And Alkali
- Brand: Chengdu Yongyi
- Color: Customized
- OEM: Welcome
- Lubrication: Grease And Oil
- Highlight: horizontal high pressure centrifugal pump



Product Description

Horizontal Single Stage Centrifugal Pump , Electric Centrifugal Chemical Pump

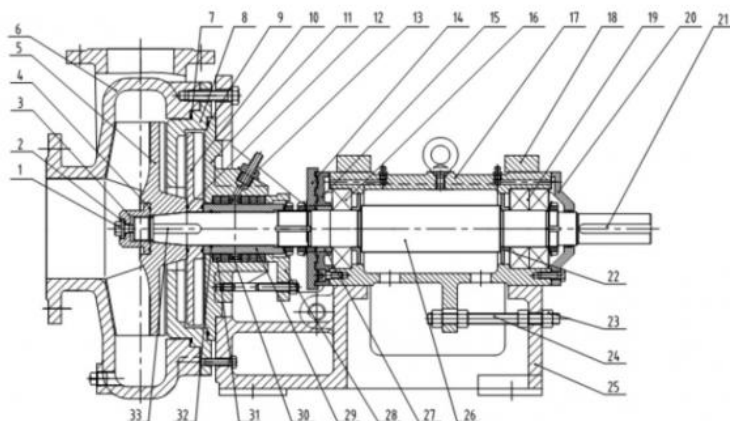
Technical Data

| | |
|--|----------------------------------|
| Model: WD-series centrifugal pump | Impeller Type: closed/ half open |
| Discharge Size: 40mm~200mm | Inlet Size: 50mm~250mm |
| Capacity: 8 ~ 800 m³/h | Head: 10 ~ 90 m |
| Maximal Efficiency: 70% | Allowed Max Particle Size: 20 mm |
| Seal Type: mechanical seal/dynamic seal/packing seal | RPM: 1450 r/min |

Product Description

WD-series pumps are horizontal corrosion-resistant centrifugal pumps, with spacious impeller flow channel and superior hydraulic performance. The back shroud of impeller is equipped with back blade, which can reduce media leakage. In order to recover pump's performance when flow passage components are worn and corroded, axial adjusting device is equipped to adjust the space between impeller and pump body. Variable types of shaft seal (including mechanical seal, dynamic seal + packing seal, dynamic seal + K-type seal) are adopted to meet the shaft sealing requirements for carrying variable media

Structure



| | | | | | | | | | |
|----|---------------|-----|-----------------------|-----|--------------------|-----|----------------------|-----|-----------------|
| *1 | Locking screw | *8 | Vice impeller chamber | 15 | Front bearing cap | 22 | Oil pan | *29 | Sleeve |
| 2 | Gasket | 9 | O-ring | *16 | Front bearing | 23 | Adjustment nut | 30 | Water seal ring |
| *3 | Impeller nut | *10 | Vice impeller | 17 | Bearing body | 24 | Adjustment screw | 31 | Filler |
| 4 | O-ring | *11 | Packing chamber | 18 | Bearing bracket | 25 | Bearing body bracket | 32 | O-ring |
| *5 | Impeller | 12 | O-ring | *19 | Rear bearing | *26 | axis | *33 | keys |
| *6 | Pump body | 13 | Rinse water nozzle | 20 | Rear bearing cover | 27 | Shield cover | | |
| 7 | O-ring | 14 | Water retaining plate | 21 | Key | 28 | Packing gland | | |

Impeller Features

- 1) The impeller is designed as open impeller, semi-open impeller, vortex impeller and closed impeller.
- 2) The closed impeller is designed as a wide-flow impeller according to the principle of multi-phase flow, which is beneficial to the passage of solid medium without clogging
- 3) The impeller is designed with back blades, and the front back blades are used to prevent the medium from flowing back toward the pump inlet.
- 4) The blades are used to reduce the axial leakage pressure and balance the axial force.
- 5) The impeller is mounted on the shaft with a conical fit for easy assembly and disassembly.
- 6) The impeller is fastened with impeller nut and locking screw.

Application

It's widely used in petroleum oil, chemical industry, rubber, leather, food industry, grease, boilers, construction, road maintenance, pharmaceutical, plastics, rubber, synthetic fiber textile, printing and dyeing and other industrial fields.



Sewage



Industrial



Mining



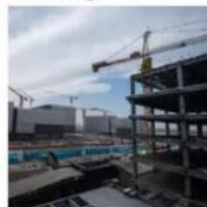
Oil Field



Paper Mills

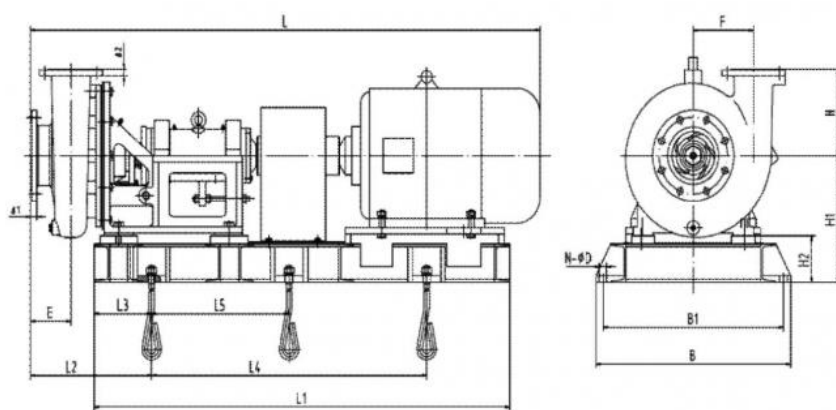


Agricultural



City Construction

Installation Dimension



Product Picture



