



## Vertical Centrifugal Industrial Sewage Pumps Submersible Mud Single Stage

Our Product Introduction

### Basic Information

- Place of Origin: Sichuan, China
- Brand Name: horizontal-slurrypump.com
- Certification: ISO9001
- Model Number: OEM
- Minimum Order Quantity: 1 set
- Price: USD 500-5000/set
- Packaging Details: Free Fumigation Export Wooden Box
- Delivery Time: 25 working days after receiveing advance payment
- Payment Terms: L/C, D/A, D/P, T/T, Western Union, MoneyGram, Paypal
- Supply Ability: 300 sets per month



### Product Specification

- Theory: Centrifugal Pump
- Max Flow: 364m<sup>3</sup>/ H
- Max Head: 58m
- Material: Corrosive Resistance Material
- Fuel: Electric
- Color: Customized
- Voltage: 380V/660V/1140V
- Structure: Single-stage Pump
- Product Name: Submersible Sewage Sump Mud Pump  
Submerged Slurry Pump
- Highlight: **vertical sewage pump**

for more products please visit us on [horizontal-slurrypump.com](http://horizontal-slurrypump.com)

## Product Description

### Vertical Centrifugal Industrial Sewage Pumps , Submersible Mud Pump Single Stage

#### Main Usage



- Mining
- Civil Construction
- Industry
- Coal Preperation
- Mineral Processing
- Chemical Precessing


#### Product Features

- a) Wear parts are all constructed with abrasion resistant materials - chromium alloy, so pumps have better stability & longer service life.
- b) Unique mechanical seal device can prevent the electric motor from high pressure water and impurities, thus high suction efficiency can be ensured.
- c) Easy installation, operation and cost saving, since no additional vacuum pump or pump house is needed.
- d) In addition to the main impeller, a pair of agitation impeller is equipped to help break and mix the sludge.
- e) Professional technology support is provided during the whole process of the usage and maintenance.

#### Technical Parameter

##### Parameter Range

	Model: ZJL-series vertical slurry pump
	Discharge Size: 40mm~200mm
	Inlet Size: 50mm~250mm
	Capacity: 6 ~ 364m³/h
	Head: 4 ~ 60 m
	Maximal Efficiency: 70%
	NPSH: 1.4m~3.5m



Impeller  
Vanes: 5/6  
Type: closed/ half open  
Material: Metal (according to working conditions )

**Structure**

Allowable Max Motor Power: 315 kw

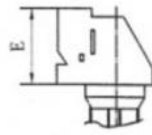
Allowed Max Particle Size: 20 mm
Seal Type: /
Pump Weight: up to 3000kg
RPM: 1450 r/min

1	Volute casing	2	support	3	Motor base
4	Impeller	5	Left support plate	6	Discharge pipe
7	Rear liner plate	8	Bearing body	9	Right support plate

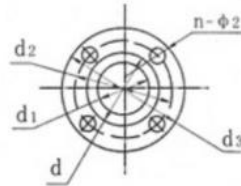
**Product Picture**



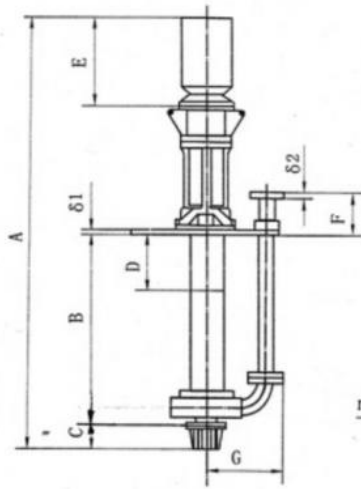
**Installation Dimension**



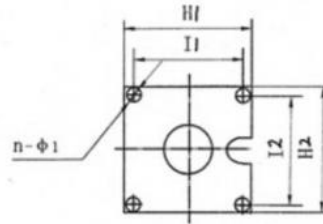
**Belt drive type**



**Outlet flange**



**Directly-coupled type**



**Supporting plate**

**ROMAN Beijing Silk Road Enterprise Management Services Co.,LTD**

86-17773109286

jeffreyth@slurrypump.com

horizontal-slurrypump.com

Floor 5, 2nd Building, Zhonglu Industrial Zone, Shenzhen City, Guangdong Province China (Mainland)