



Solid Water Circulation Horizontal Sludge Pump Electric Centrifugal Industrial

Our Product Introduction

Basic Information

- Place of Origin: Sichuan, China
- Brand Name: horizontal-slurrypump.com
- Certification: ISO9001
- Model Number: OEM
- Minimum Order Quantity: 1 set
- Price: USD500-5000/set
- Packaging Details: free fumigation export wooden box packaging
- Delivery Time: 25 working days after receiveing advance payment
- Payment Terms: L/C, D/A, D/P, T/T, Western Union, MoneyGram, Paypal
- Supply Ability: 300 sets per month



Product Specification

- Theory: Centrifugal Pump
- Flow: 4 ~ 3000 M³/h
- Head: 10 ~ 130 M
- Fuel: Electric
- Structure: Single-stage
- Product Name: Horizontal Slurry Sand Pump
- Pressure: High Pressure
- Standard Or Nonstandard: Standard
- Warranty: One Year
- Highlight: **centrifugal mud pump**

Product Description

Solid Water Circulation Horizontal Sludge Pump/ Electric Horizontal Centrifugal Slurry Pump

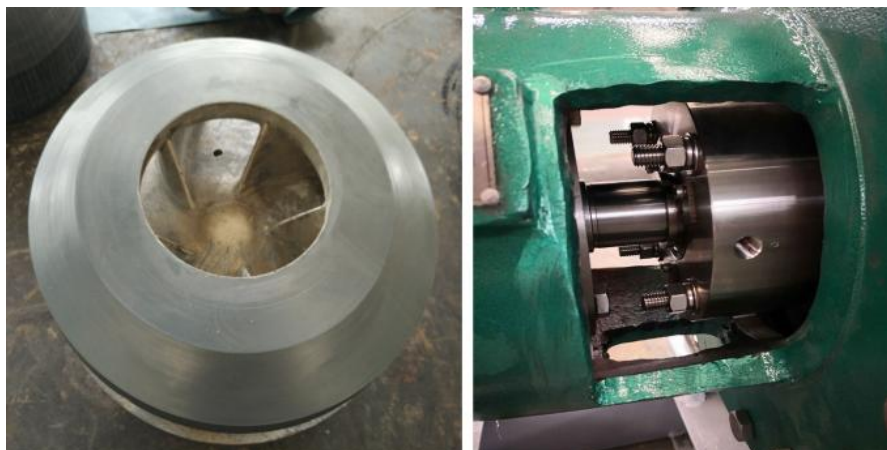
Product Details

ZJ-series slurry pumps are designed to handle liquids containing abrasive and coarse grained solids. It has a heavy duty design with a single stage axial inlet.

Shaft sleeve: A large percentage of duties allow the use of the centrifugal seal which eliminates the need of sealing water.

Gland shaft seal: A packed gland type shaft seal is also available and can be fitted with a low flow or a full flow flush seal water arrangement.

Shaft and bearing assembly: A large diameter shaft with a short overhang minimizes deflection and vibration. Heavy-duty roller bearings are housed in a removable bearing cartridge.



Main Features

- 1) Replaceable wear-resistant metal lining, impeller, sheath, guard plate and over current parts
- 2) Long service life, reliable performance and easy operation
- 3) Horizontal slurry pump

Application

Ash slurry in thermal power stations
Liquids of abrasive coarse grained solids
Aluminium Industries - Hydrate, Seed, Bauxite and Red mud Slurries
Lime mud slurry, Milk of lime, Liquor upto 50% solids
Coal slurries & floatation tailings
Iron ore in beneficiation plants
Sand water mixtures

Parameter

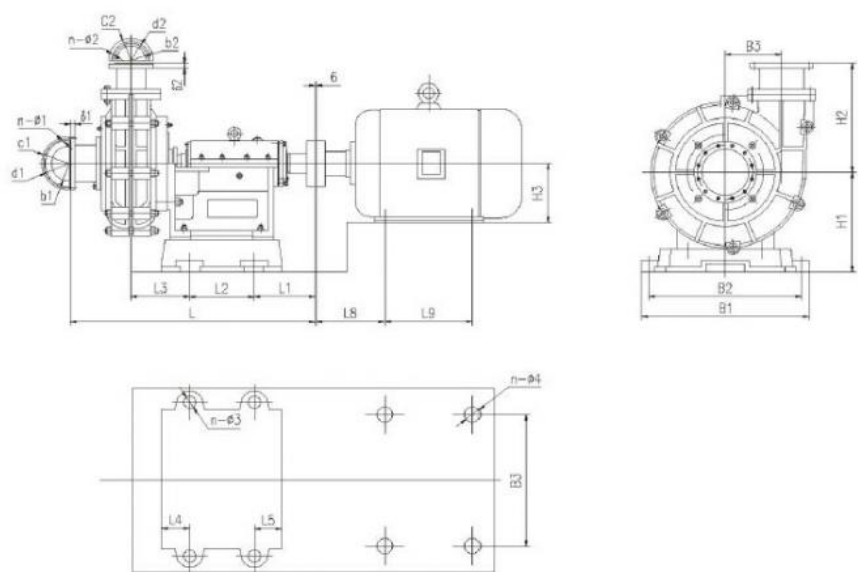
Model	Clear Water Performance				
	Flow Q	Head	Rotating speed n	Shaft power (Pa)	Effectiveness η
	(m ³ /h)	m	r/min	kw	%
300ZJ(G)-I-A	704-2333	30.6-80	490-980	135-505	66-81
250ZJ(G)-I-A	405-1480	29.1-128.7	730-980	58.3-652	54-76.9
200ZJ(G)-I-A	256-976	28-133.7	730-980	60.3-448.1	50-79.6
150ZJ(G)-I-A	164-600	19.4-91.2	730-980	15.8-161.5	46.1-74.6
100ZJ(G)-I-A	86-360	16-100.2	980-1480	6.7-105.5	58.7-70.4
80ZJ(G)-I-A	60-242	15.7-109.8	980-1480	5.5-115.9	38.8-66.7
65ZJ(G)-I-A	28-69	11.2-34.8	960-1460	1.7-10.8	54.2-63.5
50ZJ(G)-I-A	31-111	34.3-110.7	970-1480	9.7-66.9	12.2-45.1

40ZJ(G)-I-A	9-23	9.1-44.6	1400-2900	0.3-4.7	33.2-52.4
-------------	------	----------	-----------	---------	-----------

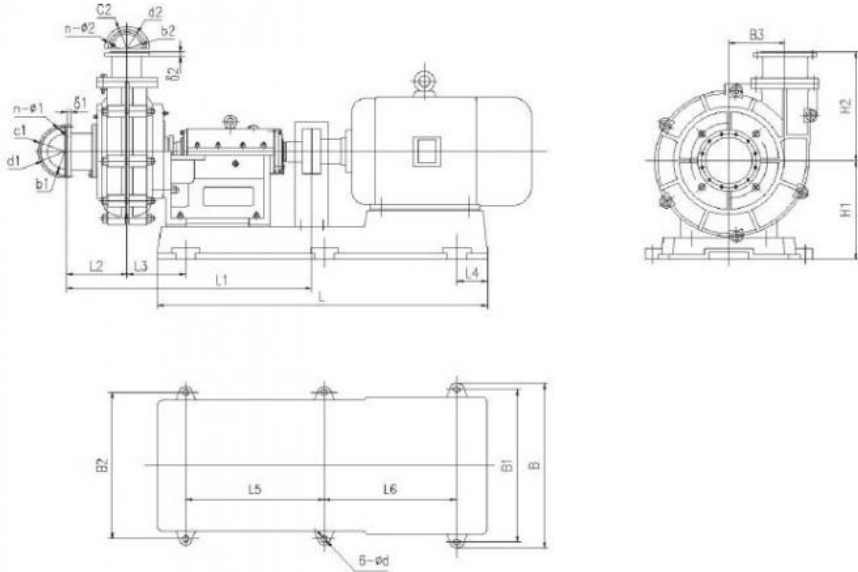
Installation Dimension

The slurry pumps adopt direct drive structure, single base installation and sharing base installation are both available for you to choose.

Single base



Sharing Base



 **ROMAN** Beijing Silk Road Enterprise Management Services Co.,LTD



86-17773109286



jeffreyth@slurrypump.com



horizontal-slurrypump.com

Floor 5, 2nd Building, Zhonglu Industrial Zone, Shenzhen City, Guangdong Province China (Mainland)